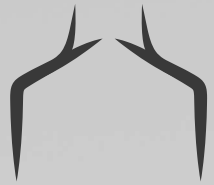


BROSSO



# BROSO

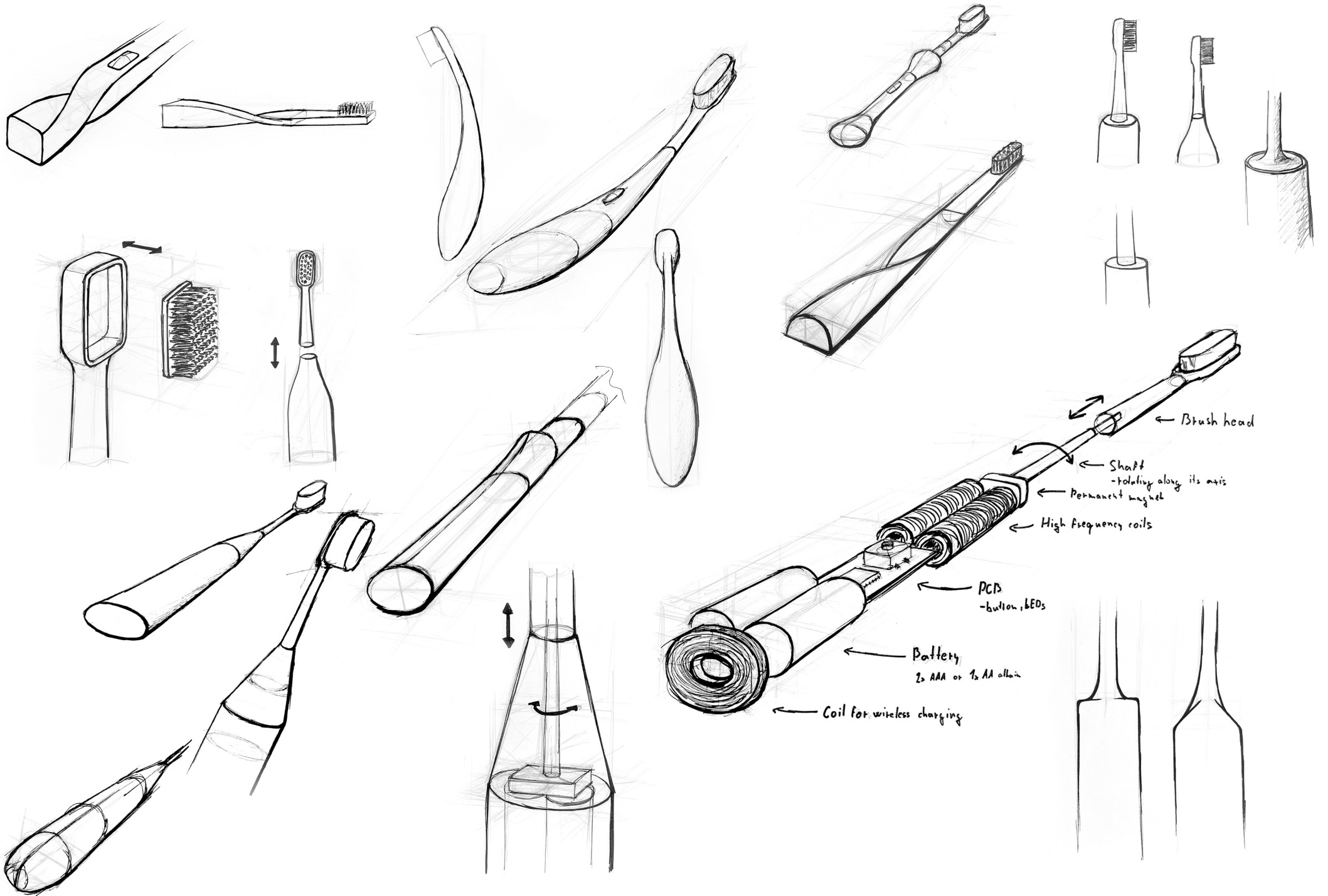
## ELECTRIC TOOTHBRUSH

Broso toothbrush reduces the boundary between the consumer and internal parts of the product. By making the body of the toothbrush transparent, the person using it can explore its components and learn how they work all during an everyday activity.

In case the toothbrush breaks, the person is already familiar with the broken parts and can be encouraged to repair them. Thus the toothbrush has an impact both on the reduction of electronic waste and on education.

And electronic components are too beautiful not to be shown





Brush head

Shaft - rotating along its axis

Permanent magnet

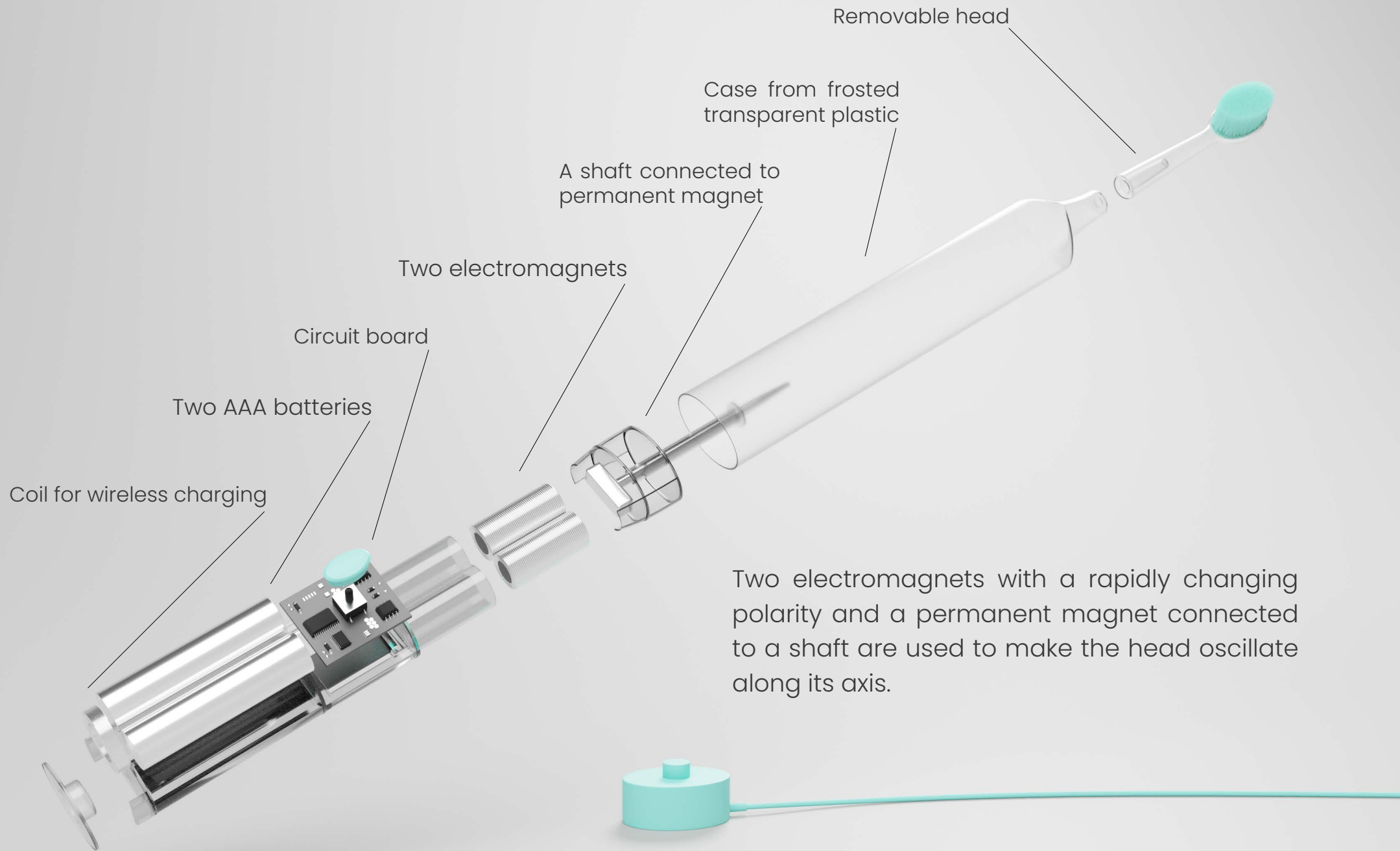
High frequency coils

PCBs - button, LEDs

Battery 2x AAA or 1x AA alkaline

Coil for wireless charging







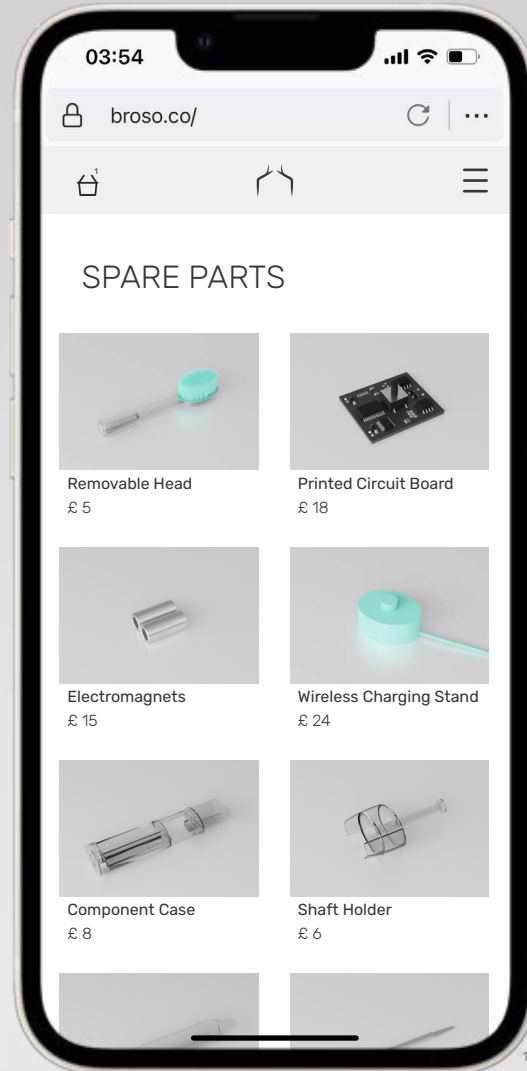
Removable head



The toothbrush has a 2-minute timer to clean all the teeth.

Every 30 seconds, the light illuminates continuously from the off state to the full brightness to signal the cleaning of the individual quarters of the mouth.





QR code printed on the circuit board links to a website with repair guides and eshop with spare parts.



[1] [www.apple.com/uk/iphone-13/](https://www.apple.com/uk/iphone-13/). Retrieved from [https://www.apple.com/v/iphone-13/a/images/overview/ios/iphone\\_hardware\\_vertical\\_\\_f3u703e3d9ea\\_medium.png](https://www.apple.com/v/iphone-13/a/images/overview/ios/iphone_hardware_vertical__f3u703e3d9ea_medium.png).